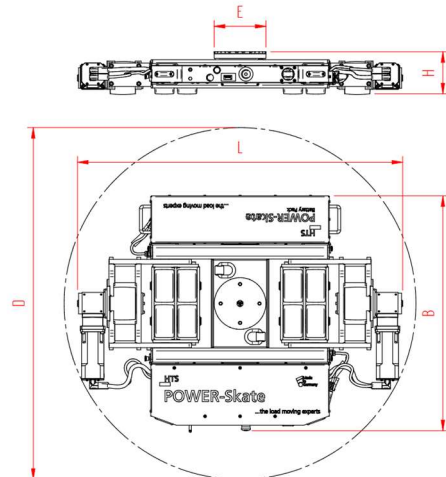
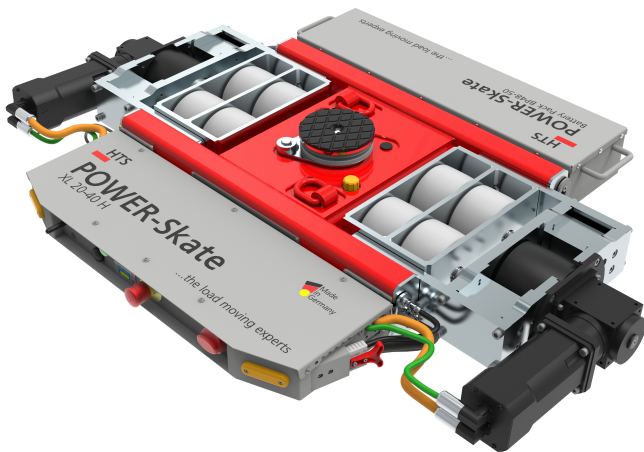


POWER-Skate XL 20-40H

radiocontrolled, battery powered

HTS



Specification:

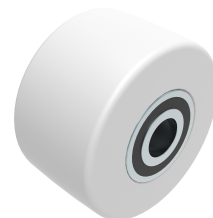
Heavy-duty transport load moving system with integrated lifting cylinder, battery-operated and radio remote controlled for professional in-plant heavy-duty transport on clean and level floors. All movements are controlled proportionally and precisely via the radio remote control with a single joystick. Model incl. LiFePo4 battery and radio remote control with chargers, turntable with non-slip waffle rubber pad, high-quality HTS nylon rollers (load rollers) and specially manufactured polyurethane drive wheels that are abrasion-resistant, non-marking and cut-resistant and suitable for all smooth and level floors. In combination with an S skate or two ROTOflex skate (the load capacity of the skates must correspond to the tractive force of the powered unit) with the same installation height, these skate systems form a safe overall system with 3 load points.

Technical data of load moving system:

# 10 202 52 10	Ø 150 mm	20000 daN
282 kg	L x B x H 1380 x 1000 x 180 mm	40000 daN
$v_{max} = 0,5$ km/h	D = 1500 mm	Friction of drive wheel / ground $\geq 0,3$
3,5 h / 3,5 h	2,4 GHz	Floor conditions: according to DIN 18202 table 3 line 3

Equipped with the following load wheels:

# 11 140 10 25 R	12,0 x 45 = 540 mm ² ▼ 46,3 MPa
MAT NY, 80 Shore D	Ø140x86 - Ø30 mm
# 8	43,2 cm ²



Please always observe the operating instructions, their safety instructions and local conditions!

# Part No.	# Number of wheels	Load-Area in mm	Area mm ² of the roller surface pressure ▼ N/mm ²	Maximum trailing load in daN with two additional support points
MAT Wheel material layer, core: AL Aluminium, NY Nylon, PU Polyurethane, ST Steel	Dimensions of wheel, inside ball bearing diameter mm	Dimensions in mm LxBxH	Loaded area per skate in cm ²	Capacity/charging time with 8A charging current. Fast charger on request
Capacity of the load moving skate in daN	Weight kg	Turning circle D in mm	Frequenz in GHz Others on request	Floor conditions

POWER-Skate XL 20-40H

radiocontrolled, battery powerd

HTS



Equipped with the following drive wheels:



93 000 11 00



19,0 x 100 = 1900 mm²
▼ 10,5 MPa



93 Shore A



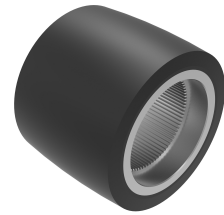
Ø140x100 mm



2



38 cm²



Combination options:

	POWER-Skate XL 20-40H (10 202 52 10)	XN20S-B (10 200 55 20)	
1			
	POWER-Skate XL 20-40H (10 202 52 10)	RFXN12 (10 120 03 41)	RFXN12 (10 120 03 41)
2			

Technical data for the stroke.



50 mm Hub

Please always observe the operating instructions, their safety instructions and local conditions!

#	Part No.	#	Number of wheels	□/∅	Load-Area in mm	Wheel icon	Area mm ² of the roller surface pressure ▼ N/mm ²	Two points icon	Maximum trailing load in daN with two additional support points
MAT	Wheel material layer, core: AL Aluminium, NY Nylon, PU Polyurethane, ST Steel	Wheel icon	Dimensions of wheel, inside ball bearing diameter mm	↔	Dimensions in mm LxBxH	Wheel icon	Loaded area per skate in cm ²	Battery icon	Capacity/charging time with 8A charging current. Fast charger on request
Wheel icon	Capacity of the load moving skate in daN	Weight icon	Weight kg	Circle icon	Turning circle D in mm	Wave icon	Frequenz in GHz Others on request	Triangle icon	Floor conditions