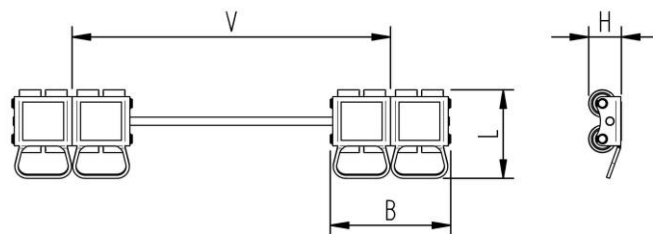
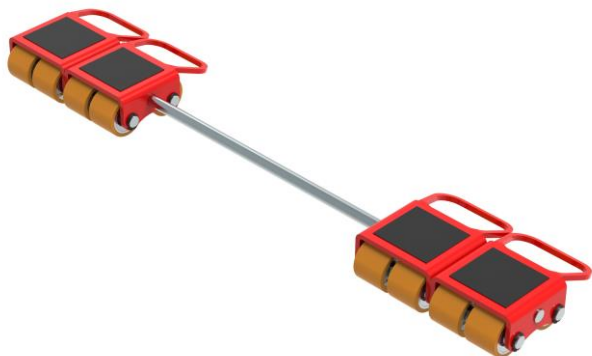


Fact sheet **ECO-Skate** M50S

Load moving system, rear, 3-/4- load points

HTS



Specification:

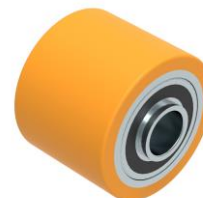
Heavy-duty load moving system for the professional indoor heavy load transport on clean, smooth and level floors, incl. alignment bars, anti-slip pad and high-quality HTS 3-component polyurethane wheels, which are abrasion-resistant, non-marking and cut-resistant as well as suitable for all smooth and level floors with slight unevenness. In combination with a L or ROTO skate with the same installation height it forms a safe overall system with 3 load points. For two ROTO skates, observe the operating instructions for 4-point supports.

Technical data of load moving system:

# 10 050 07 20	75 x 150 mm	5,5 x 37 = 204 mm ² ▼ 15,0 MPa
MAT PU, ST, 93 Shore A	L x B x H 162 x 221 x 60 mm	32,7 cm ²
2 x 2500 daN	V = 221 - 584 mm	250 daN*
2 x 8	10 kg	150 daN*

Equipped with the following wheel:

# 11 050 01 42	5,5 x 37 = 204 mm ² ▼ 15,0 MPa
MAT PU, ST, 93 Shore A	312,5 daN
Ø50x46 - Ø15 mm	V _{max} = 2 km/h



Please always observe the operating instructions, their safety instructions and local conditions!

# Part No.	# Number of wheels	□/∅ Load Area in mm	□/∅ Area mm ² of the roller surface pressure ▼ N / mm ²	→ Traction* in daN, required force to move the load at a steady speed of 2 km/h under ideal conditions
MAT Wheel material layer, core: AL Aluminium, NY Nylon PU Polyurethane, ST Steel	□/∅ Dimensions of wheel, inside ball bearing diameter mm	□/∅ Dimensions in mm L x B x H	→ Loaded area per skate in cm ²	
□/∅ Carrying Capacity of load moving skate in daN at 2km/h max.	□/∅ Weight kg	□/∅ Steering bar length D for L, adjustability V for S and DUO skate systems	→ Starting resistance* in daN, required force to start moving, under ideal conditions	* Varies depending on the tolerances of the floor and ambient situation. All information without guarantee.